

**POSTMASTER'S CERTIFICATE.**

I, Sherman G. Batchelor, hereby certify that I have personally seen Coronal Monuments 6 inches square and 3 feet long in place as shown on annexed plat, also that I have inspected test pit taken soil samples, sealed, signed and expressed same to Washington D.C.

**CITY ENGINEER'S CERTIFICATE**

I, Gordon H. Farnold, hereby certify that the survey and plan shown on the annexed plat were made in April 1929 under my supervision, and that all monuments, street lines, lot lines, and officially established elevations are correctly shown.

*Gordon H. Farnold*  
City Engineer of the City of San Bernardino, California.

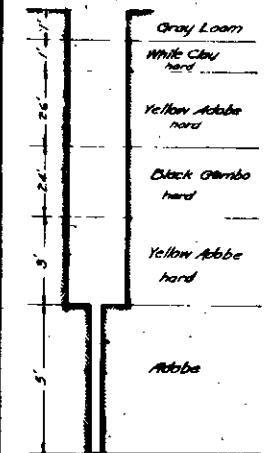
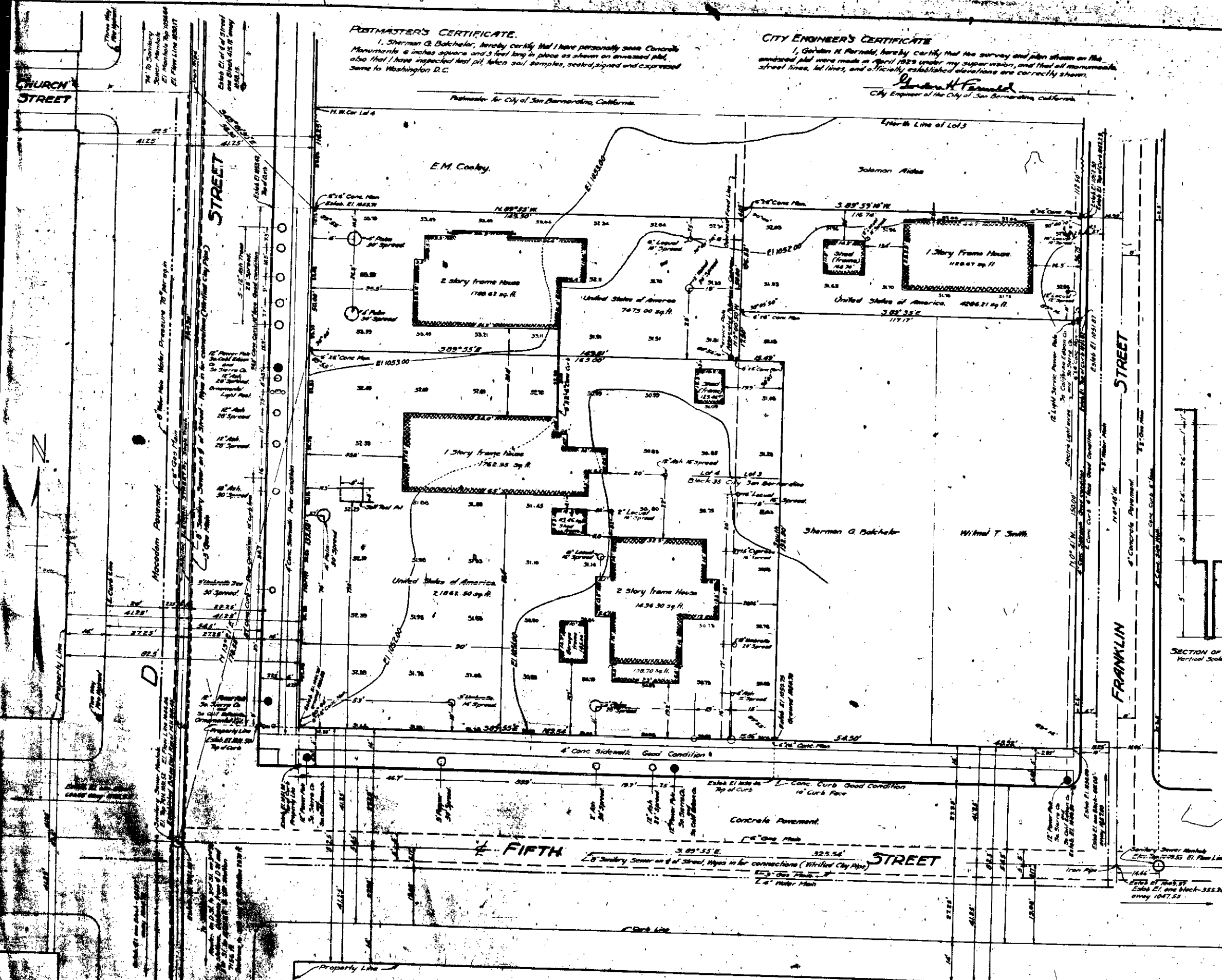
**-NOTES-**

A set back line of 30 ft. from the center line of D St. between Third and Fifth St. has been officially established by ordinance, and as there is a movement under way to widen D St. to 100 ft. from Fifth St. north would advise a set back line of 50 feet from the center line of D St. No set back lines required on any other street.

All trees shown on the annexed plat are healthy and are in good condition.

All sewers shown in streets are Public Sanitary sewers only. Imhoff Tanks and sprinkling filters type of disposal. Established elevations shown along curbs and walks are also the actual elevations of same.

Gas mains shown in the streets carry Natural Gas. Safe Bearing Value of soil estimated at two tons per sq. ft.



SCALE 1/2 INCH = 1 FOOT.

SAN BERNARDINO,  
CALIFORNIA.

**POSTMASTER'S CERTIFICATE.**

I, Sherman G. Batchelor, hereby certify that I have personally seen Coronal Monuments 6 inches square and 3 feet long in place as shown on annexed plat, also that I have inspected test pit taken soil samples, sealed, signed and expressed same to Washington D.C.

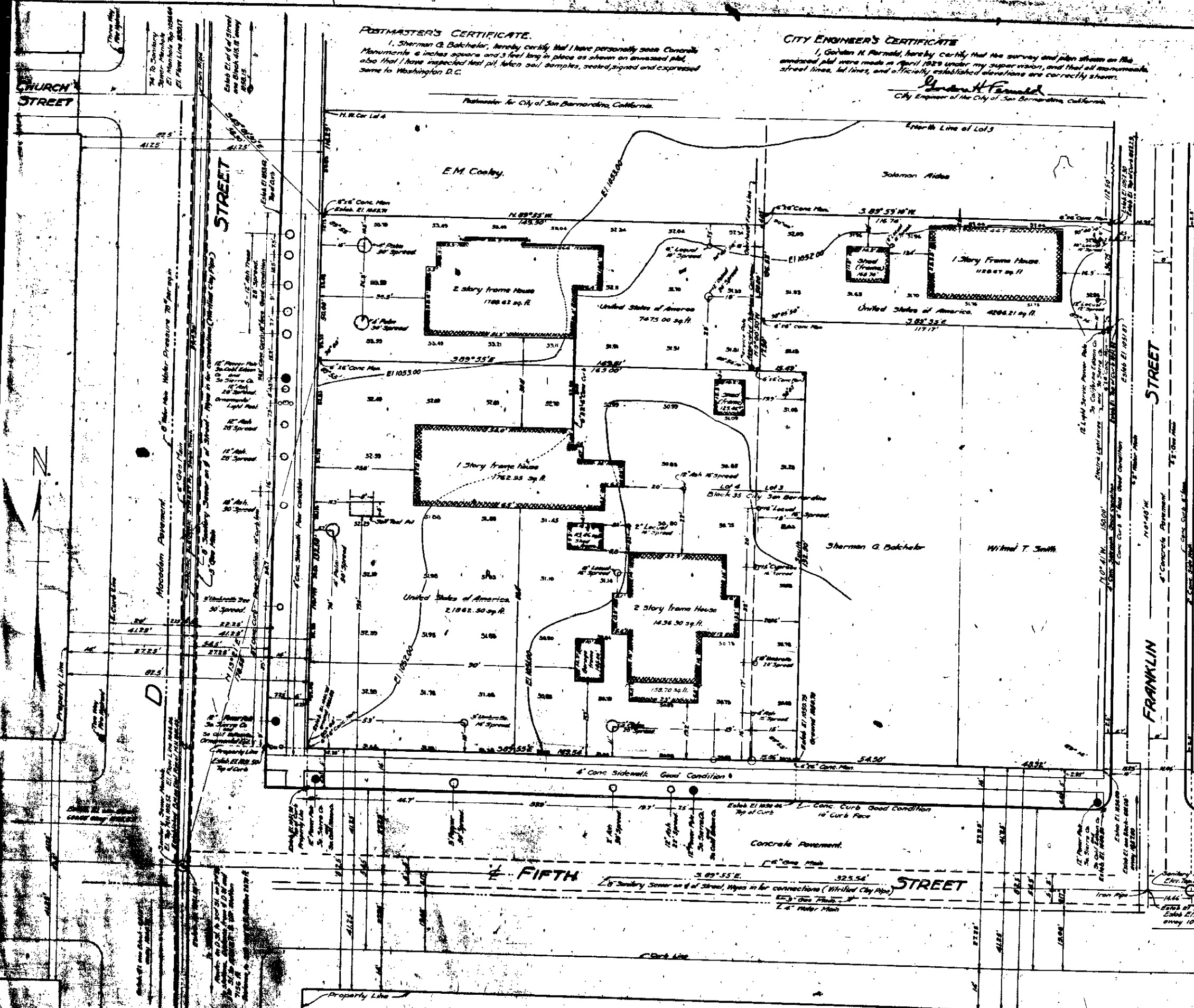
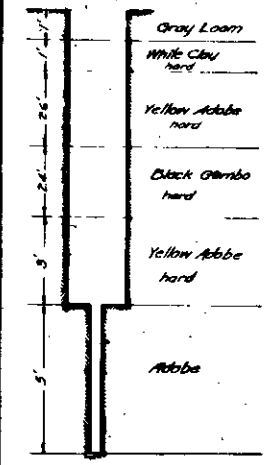
**CITY ENGINEER'S CERTIFICATE**

I, Gordon H. Farnell, hereby certify that the survey and plan shown on the annexed plat were made in April 1929 under my supervision, and that all monuments, street lines, lot lines, and officially established elevations are correctly shown.

*Gordon H. Farnell*  
City Engineer of the City of San Bernardino, California.

**-NOTES-**

A set back line of 30 ft. from the center line of D St between Third and Fifth St. has been officially established by ordinance, and as there is a movement under way to widen D St. to 100 ft. from Fifth St. north would advise a set back line of 50 feet from the center line of D St. No set back lines required on any other street.  
All trees shown on the annexed plat are healthy and are in good condition.  
All sewers shown in streets are Public Sanitary sewers only. Inhoff Tanks and sprinkling filters type of disposal. Established elevations shown along curbs and walks are also the actual elevations of same.  
Gas mains shown in the streets carry Natural Gas. Safe Bearing Value of soil estimated at two tons per sq. ft.



SCALE 1/2 INCH = 1 FOOT.

SAN BERNARDINO,  
CALIFORNIA.